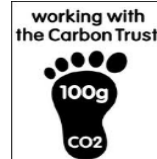


# Capital efficient development of resource efficient startups

Andrew Wordsworth

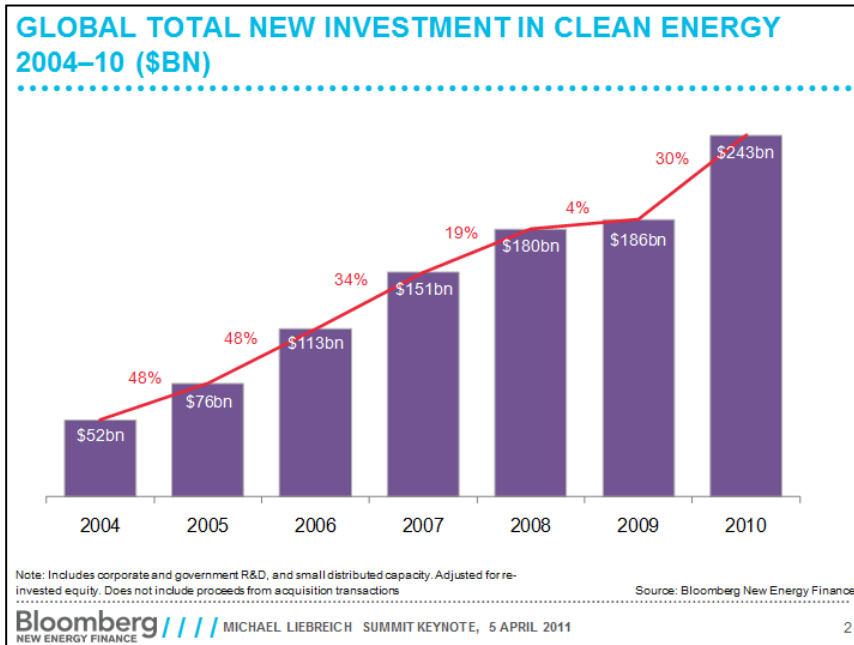
# Introduction



15 VENTURES

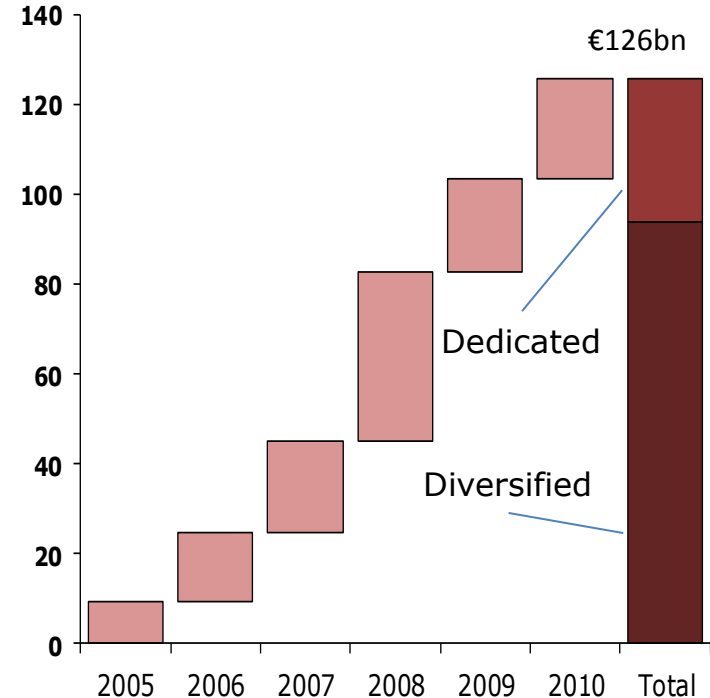
£250 MILLION RAISED

# A history lesson...



## Private Equity Cleantech Funds Raised\*

€Bn



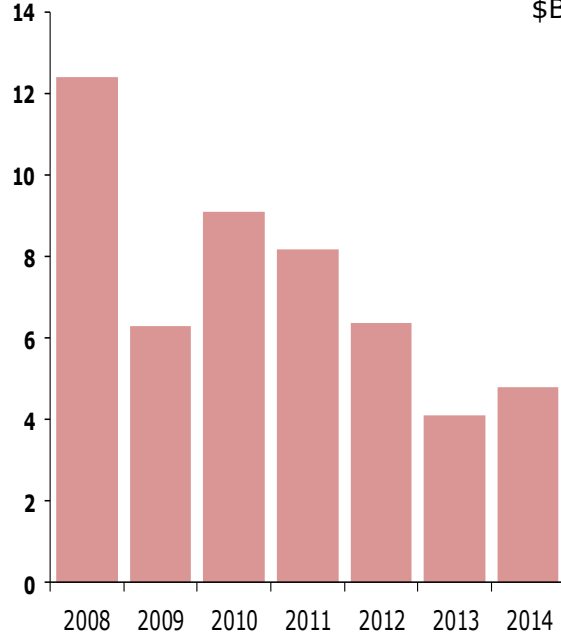
Source Preqin: Private Equity Cleantech review, April 2011, SV analysis

Note: \*Annual fundraising by funds that include Cleantech Investments as part or all of their focus

# Cleantech investment remains unfashionable

## Cleantech

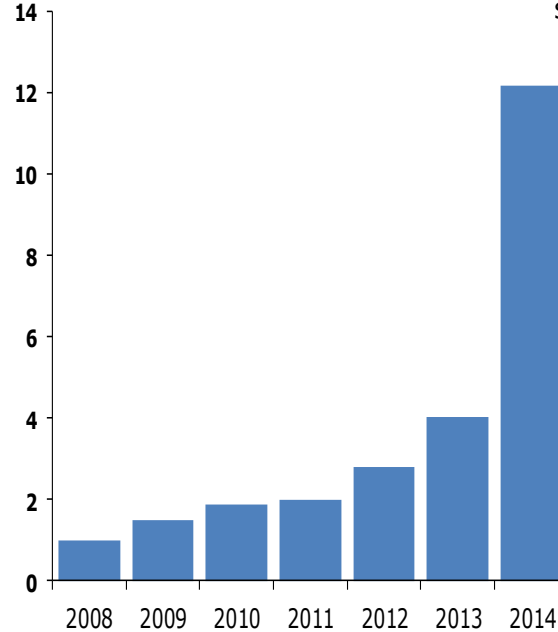
VC/PE Investments  
\$Bn



Source: BNEF, Global trends in Clean Energy Investment

## Fintech

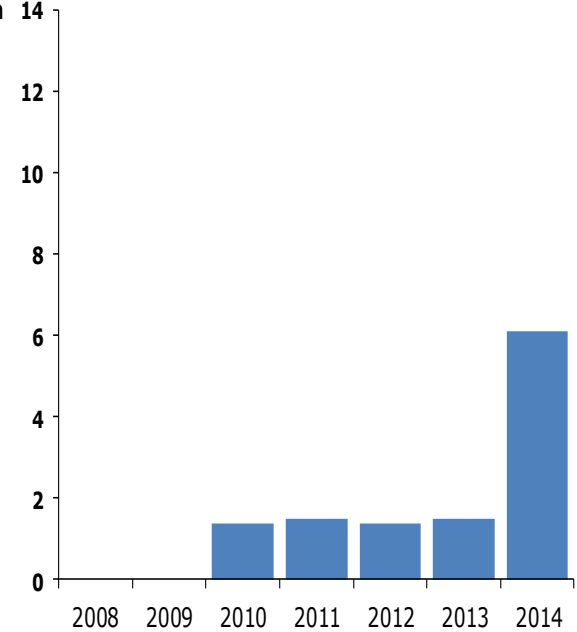
VC/PE Investments  
\$Bn



Source: Accenture-The-Future-of-Fintech-and-Banking

## Transportation

VC/PE Investments  
\$Bn

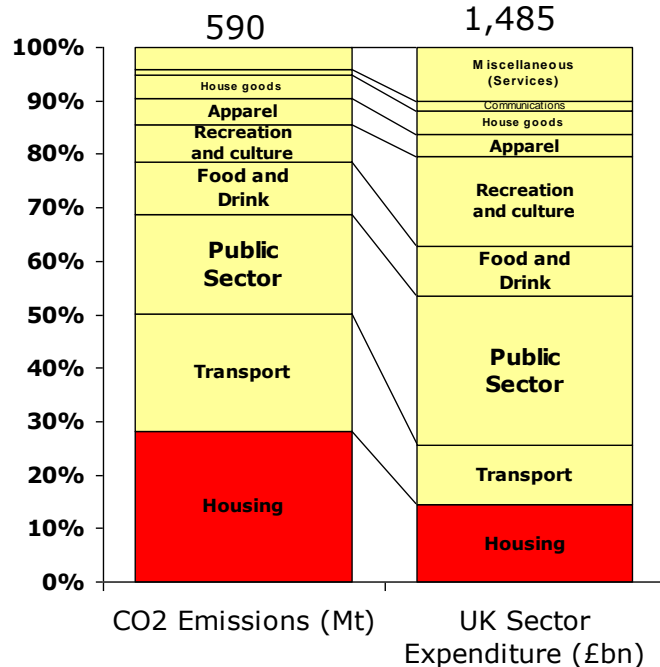


Source: i3, transportation investment review

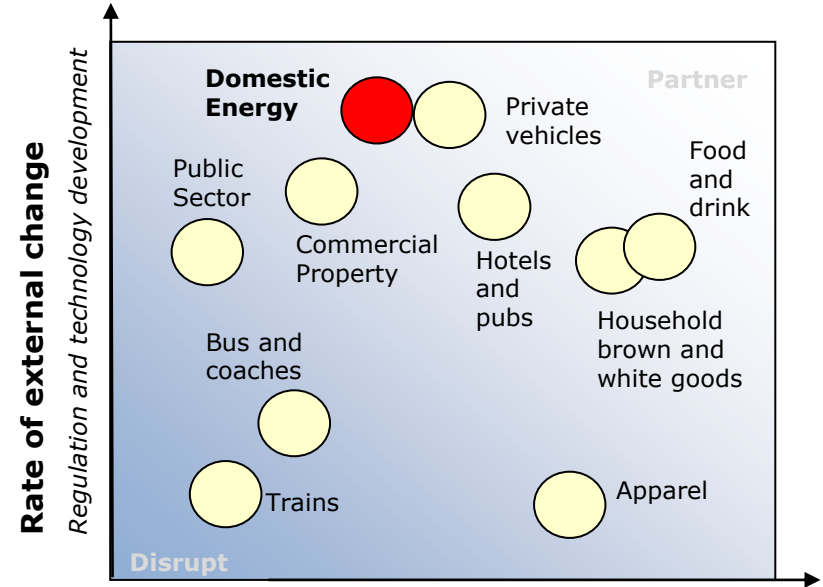


# Pre-requisite is taking a market-led approach

## Consumer emissions and expenditure %UK Total (2010)



## Sector characterisation



Note: Consumer emissions based on allocation of organisational emissions to SIC supply chains

Source: Carbon Trust, "Carbon in all we consume"

CONTACT

# SUSTAINABLE BRIDGES



Andrew Wordsworth

**Phone:** +44 (0) 20 3582 0855

29, Shand Street  
London  
SE1 2ES

**Email:** [info@sustainableventures.co.uk](mailto:info@sustainableventures.co.uk)

**Website:** [www.sustainableventures.co.uk](http://www.sustainableventures.co.uk)