

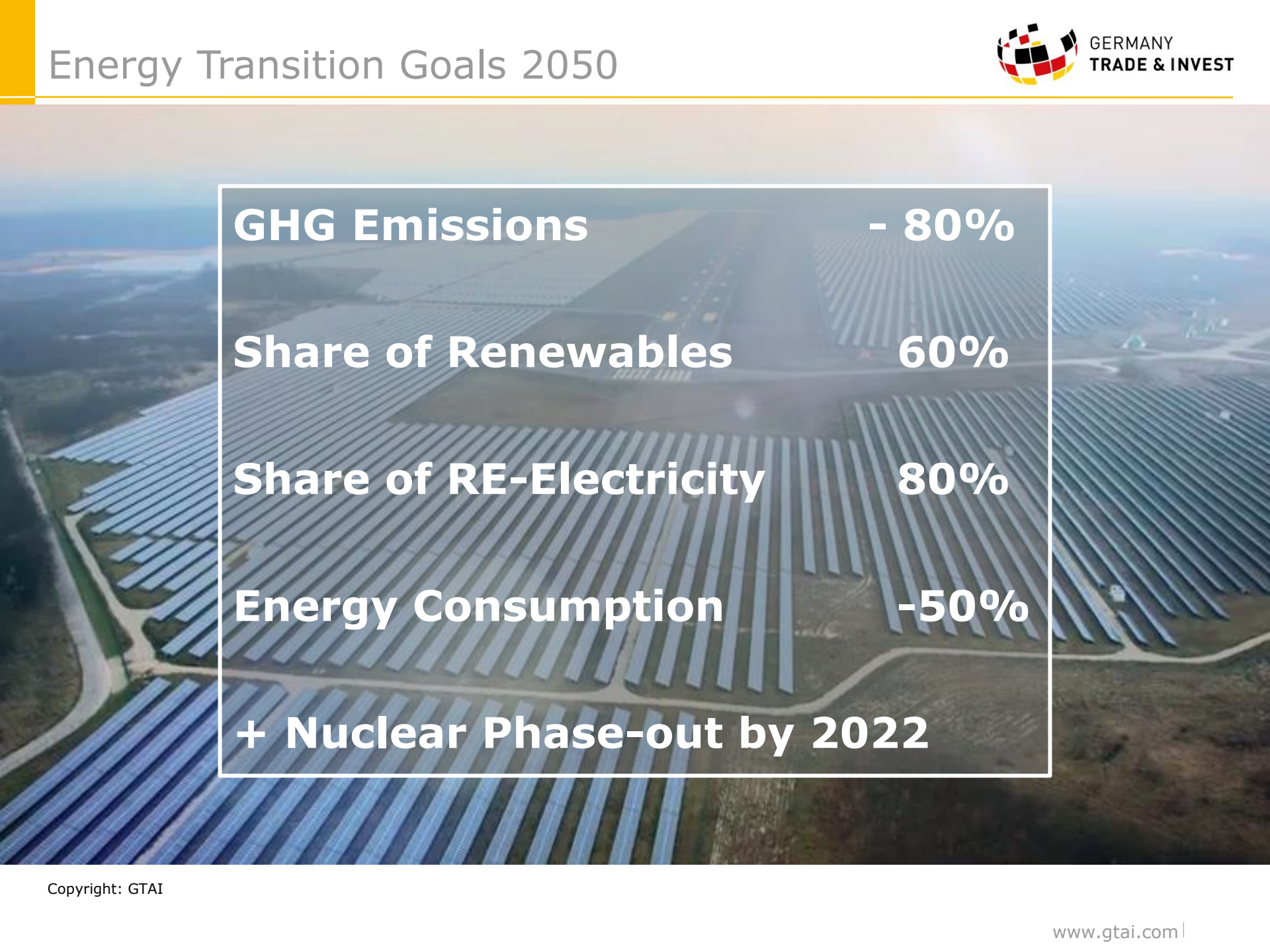
©Chris Schmidt - istockphoto

## Germany Trade & Invest - Supporting Foreign Investment Projects in Germany

Thomas Grigoleit, Director Energy, Environment and Resources  
Christina Schön, Senior Manager Investor Support Services  
Eco Summit, London 2015



GERMANY  
TRADE & INVEST



<b>GHG Emissions</b>	<b>- 80%</b>
<b>Share of Renewables</b>	<b>60%</b>
<b>Share of RE-Electricity</b>	<b>80%</b>
<b>Energy Consumption</b>	<b>-50%</b>
<b>+ Nuclear Phase-out by 2022</b>	

# Energiewende in Germany

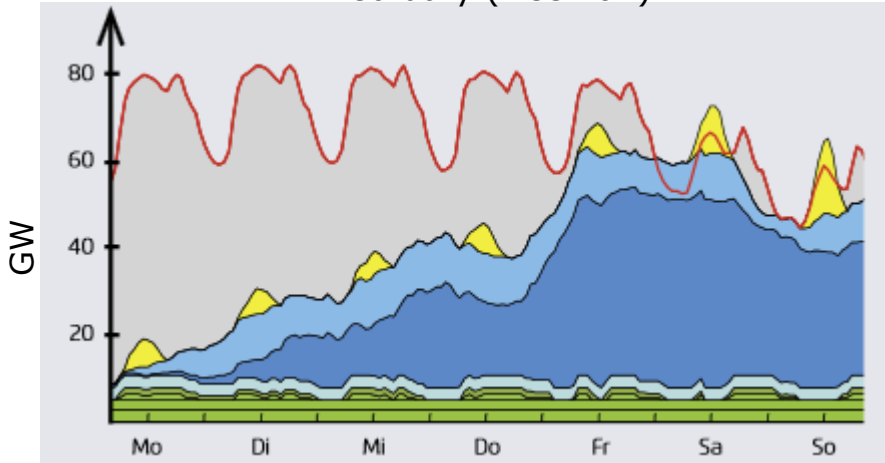
Future electricity mix in Germany will be based on Wind and PV



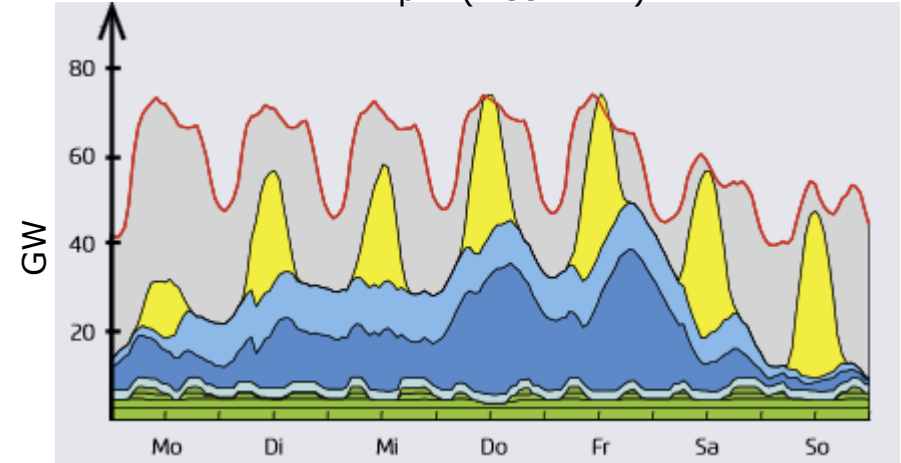


## Simulation of German grid in 2022: Daily & seasonal fluctuations increase

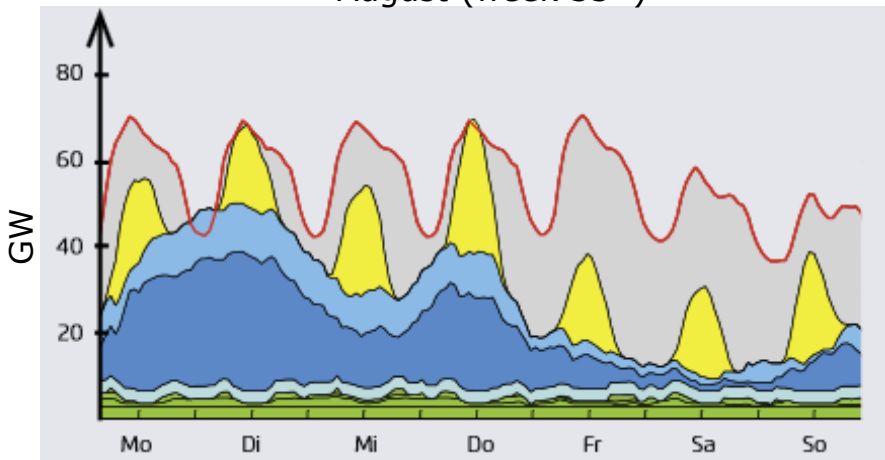
February (week 6<sup>th</sup>)



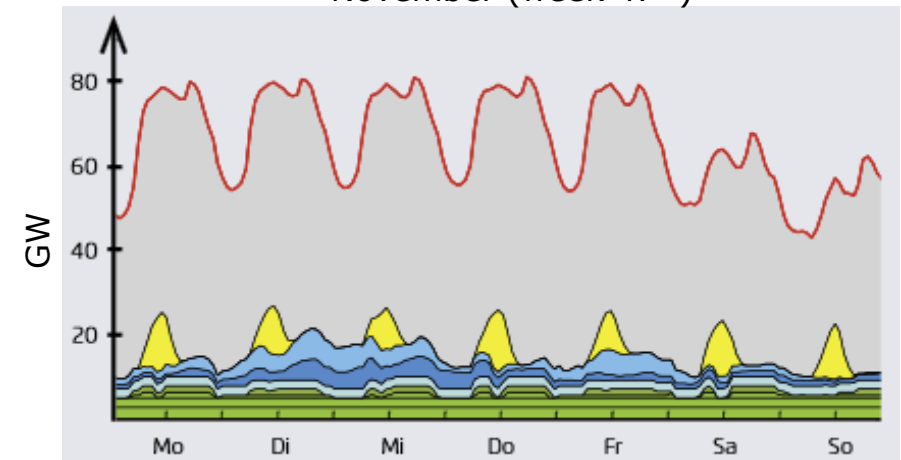
April (week 14<sup>th</sup>)



August (week 33<sup>th</sup>)



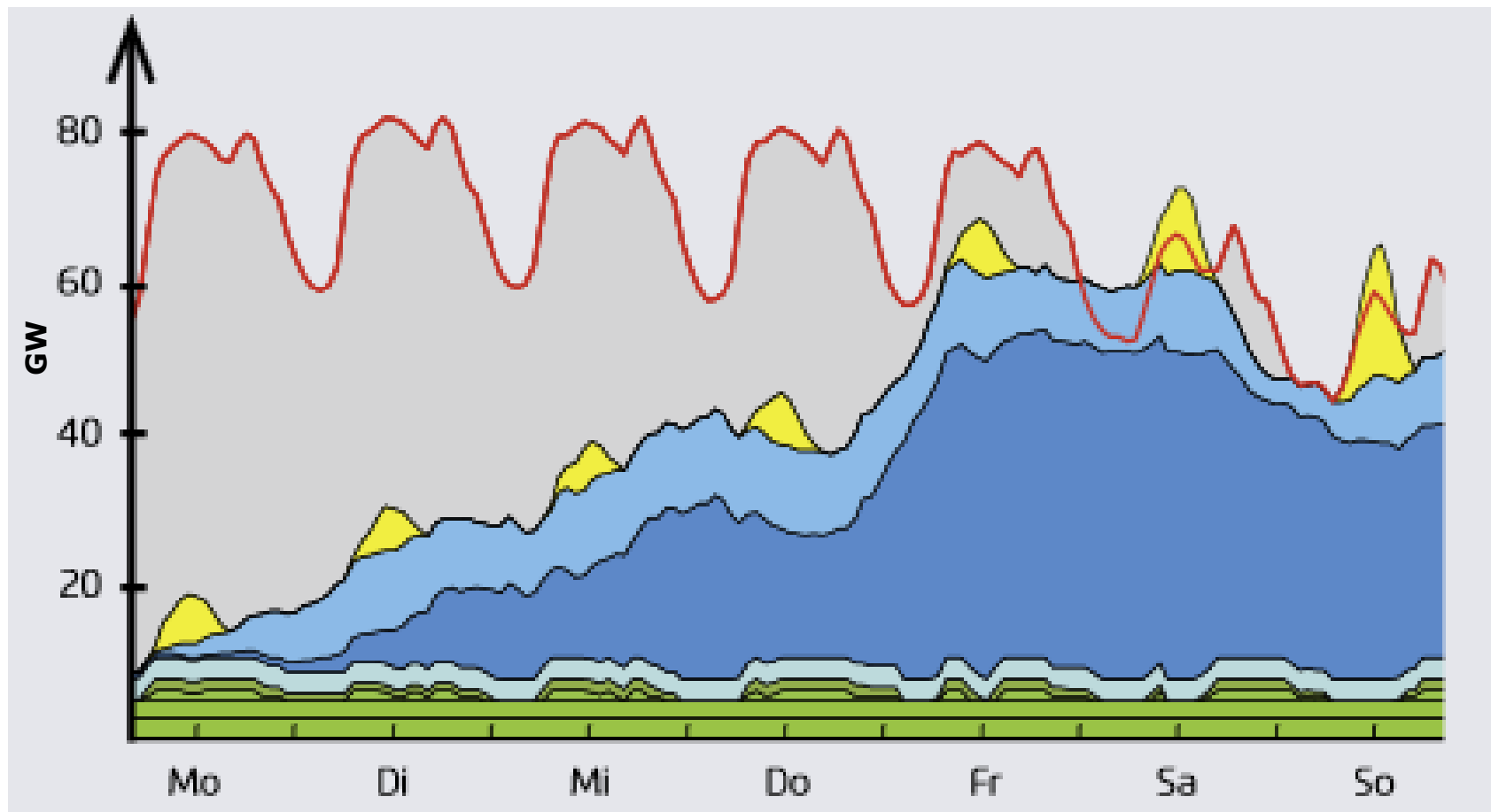
November (week 47<sup>th</sup>)



 PV      Wind     Biomass     Fossiles     Electricity demand

## Simulation of German grid in 2022

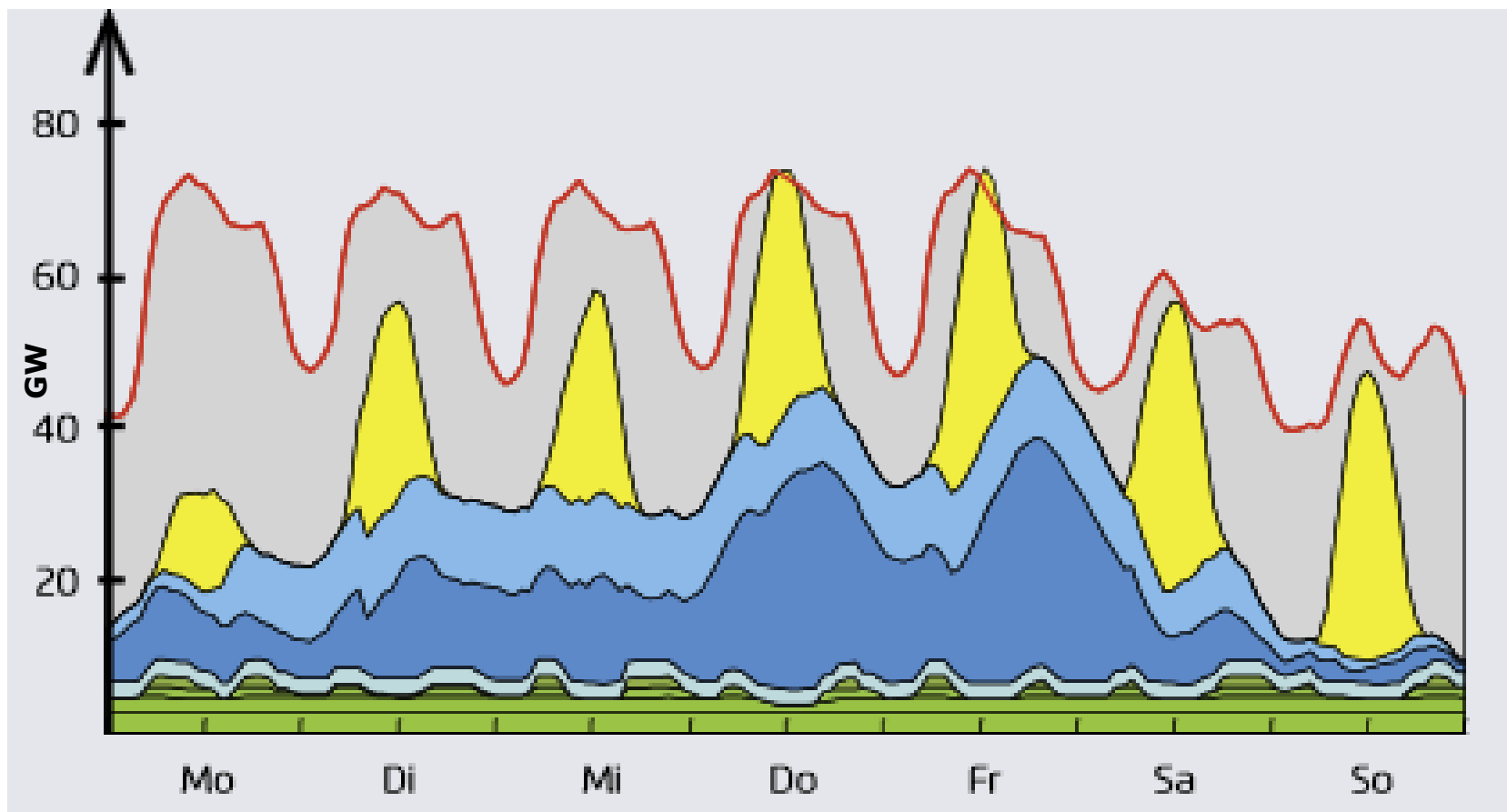
February (week 6<sup>th</sup>)



 PV     Wind     Biomass     Fossiles     Electricity demand

## Simulation of German grid in 2022

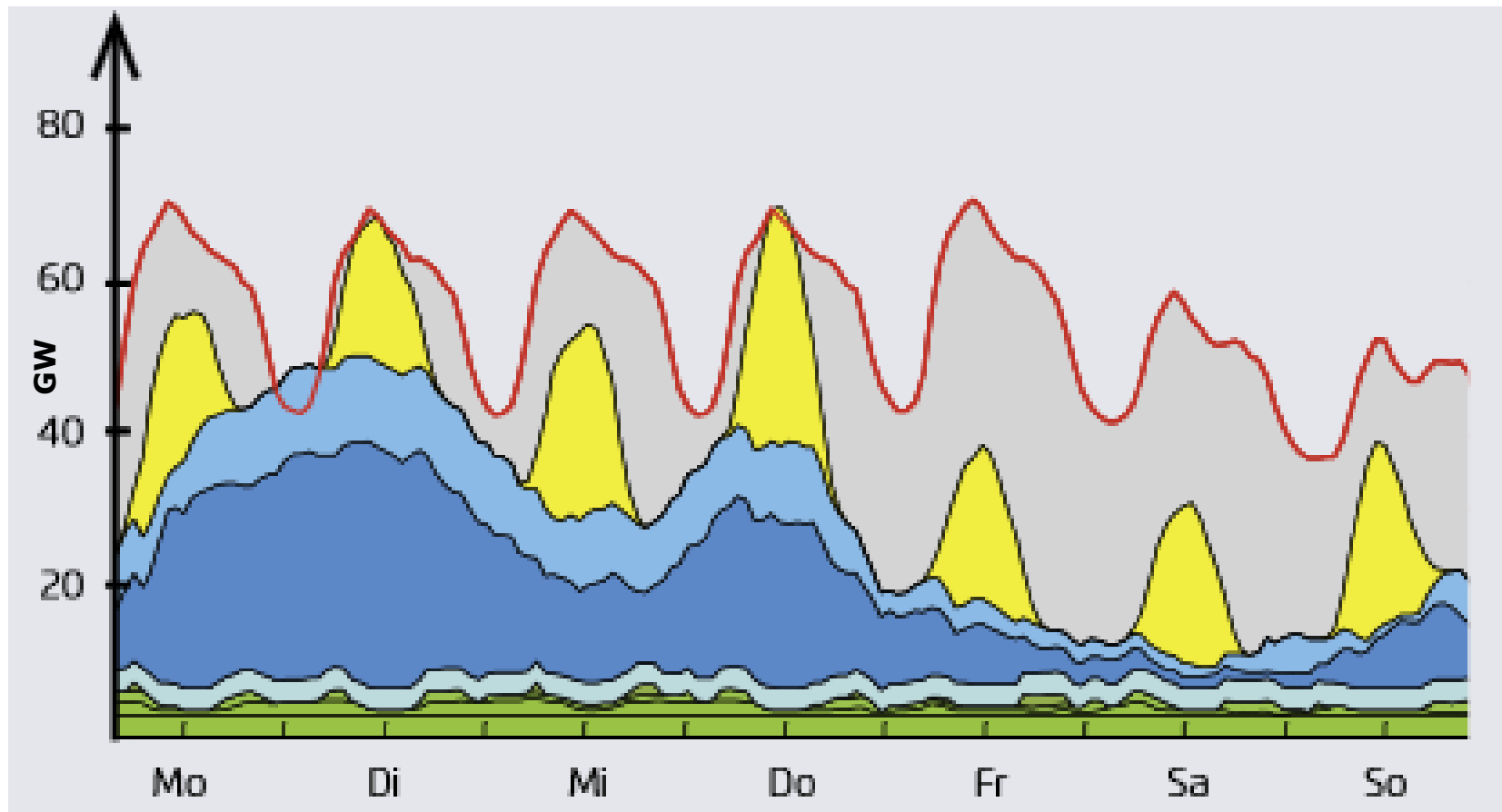
April (week 14<sup>th</sup>)



 PV     Wind     Biomass     Fossiles     Electricity demand

## Simulation of German grid in 2022

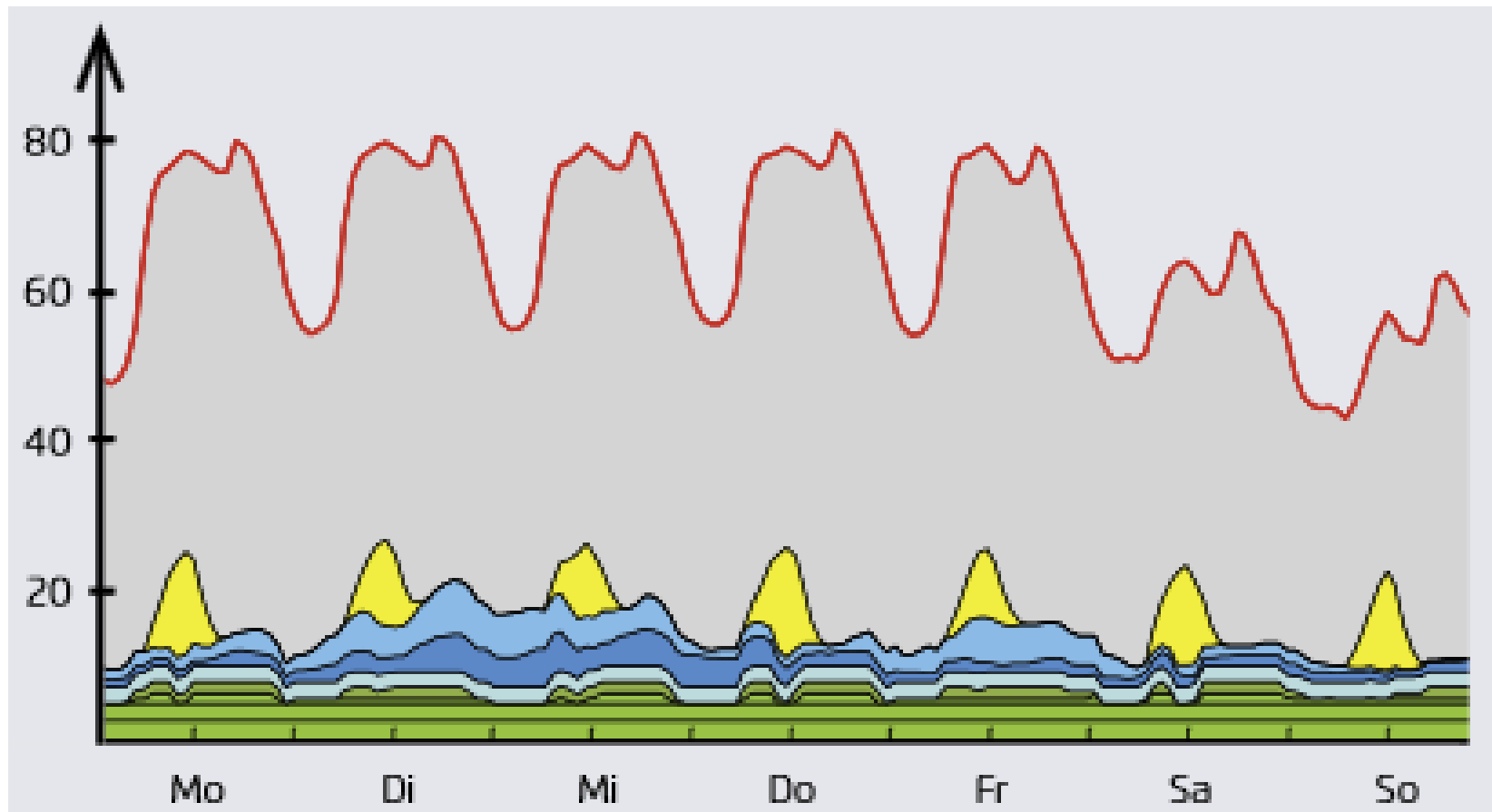
August (week 33<sup>th</sup>)



 PV     Wind     Biomass     Fossiles     Electricity demand

## Simulation of German grid in 2022

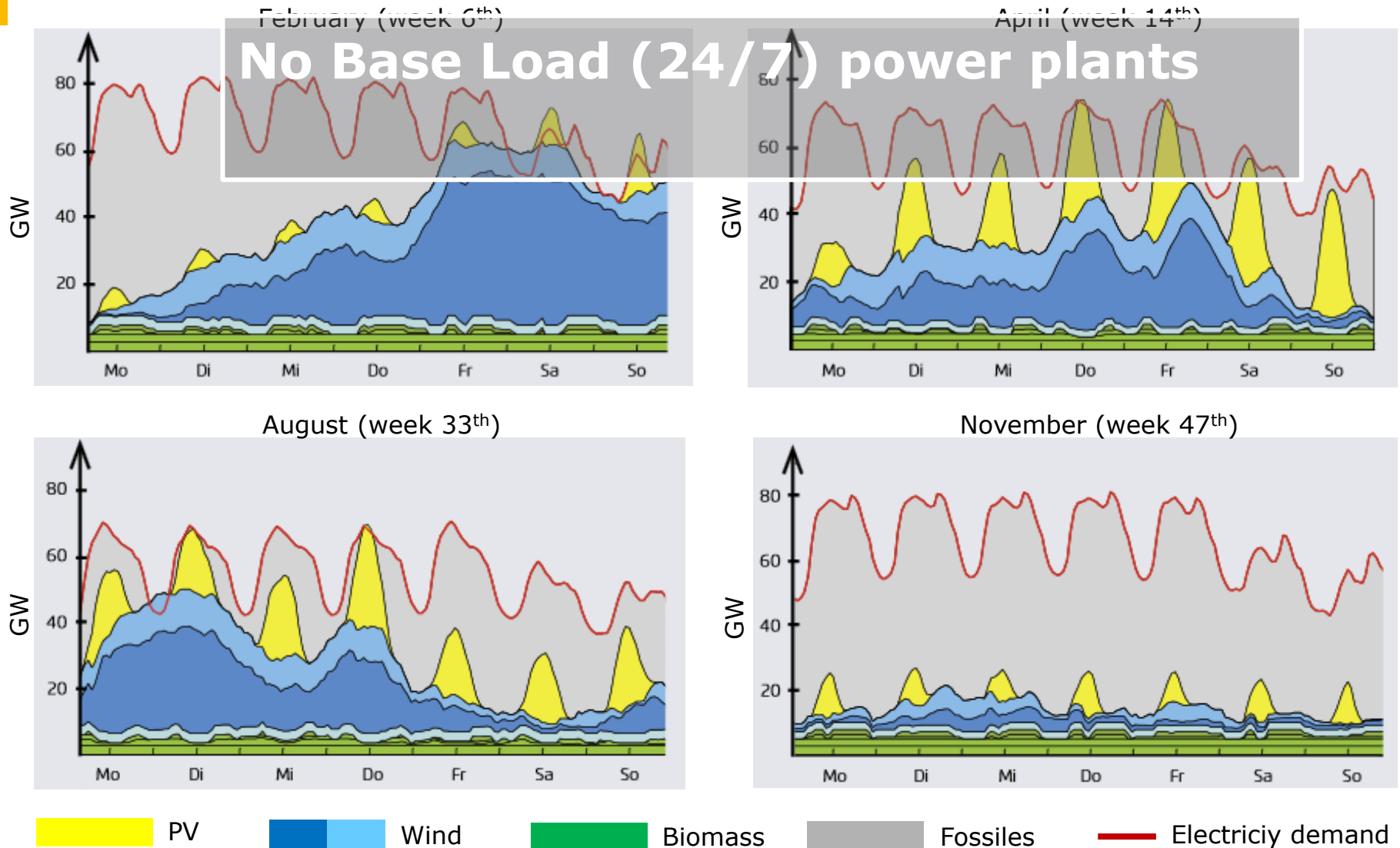
November (week 47<sup>th</sup>)



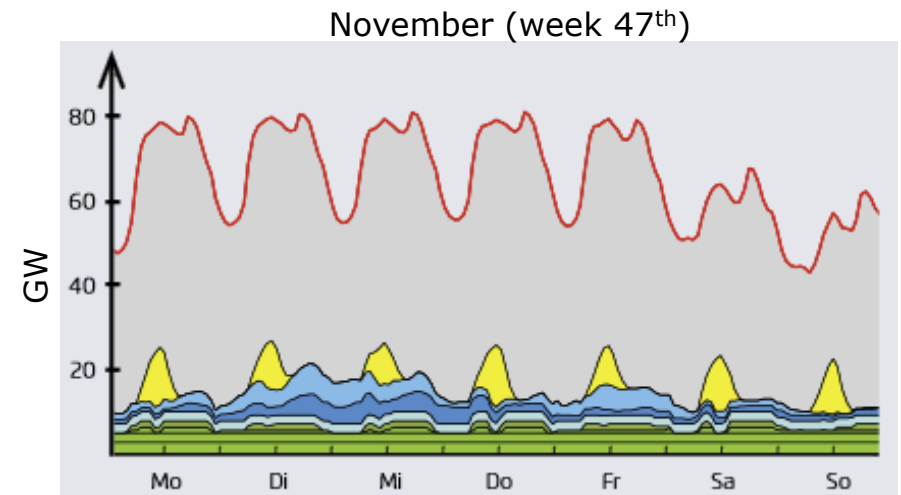
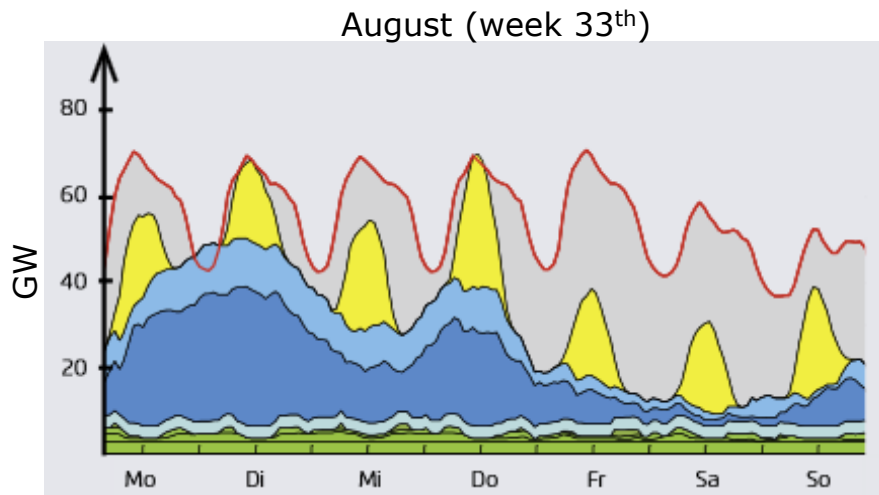
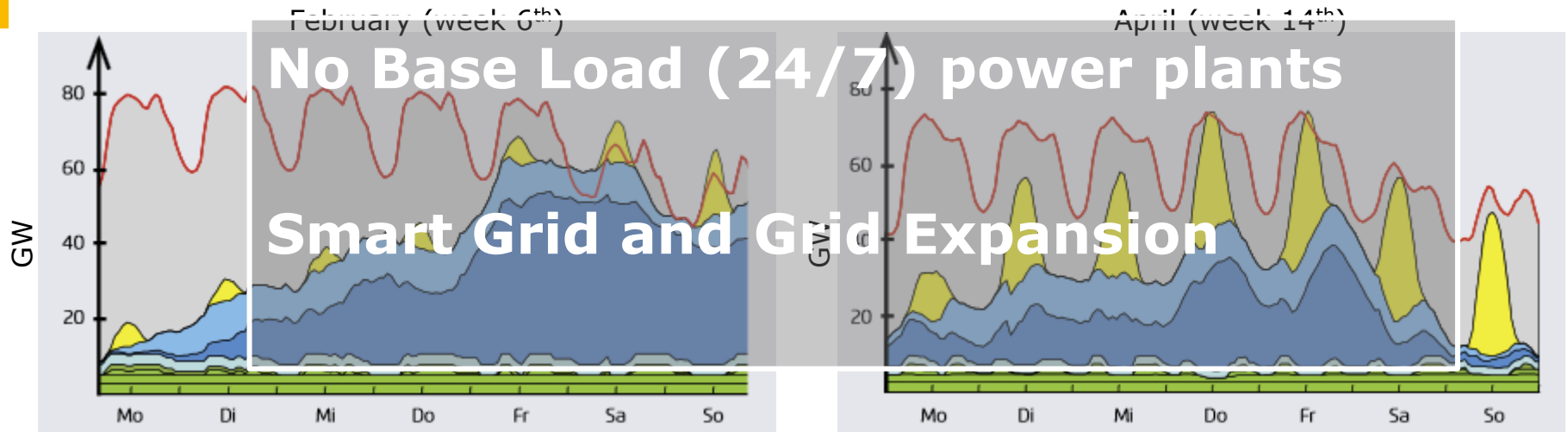
 PV     Wind     Biomass     Fossiles     Electricity demand



## Simulation of German grid in 2022: Daily & seasonal fluctuations increase

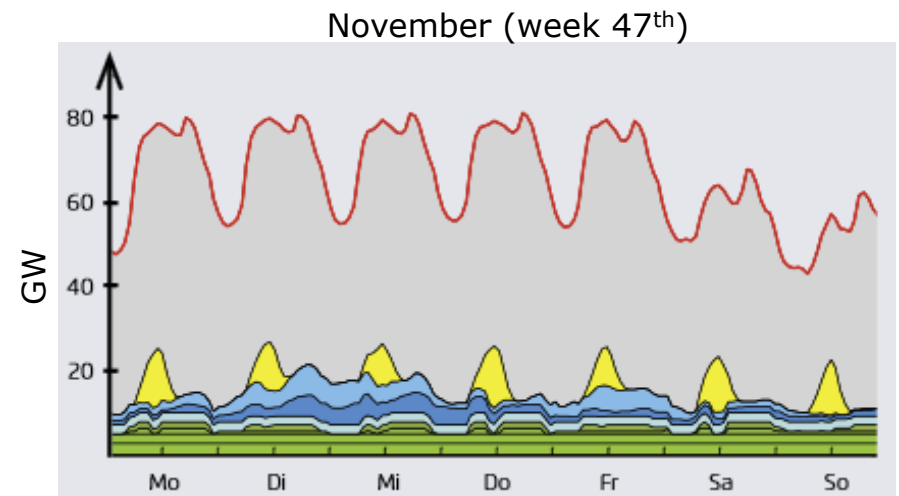
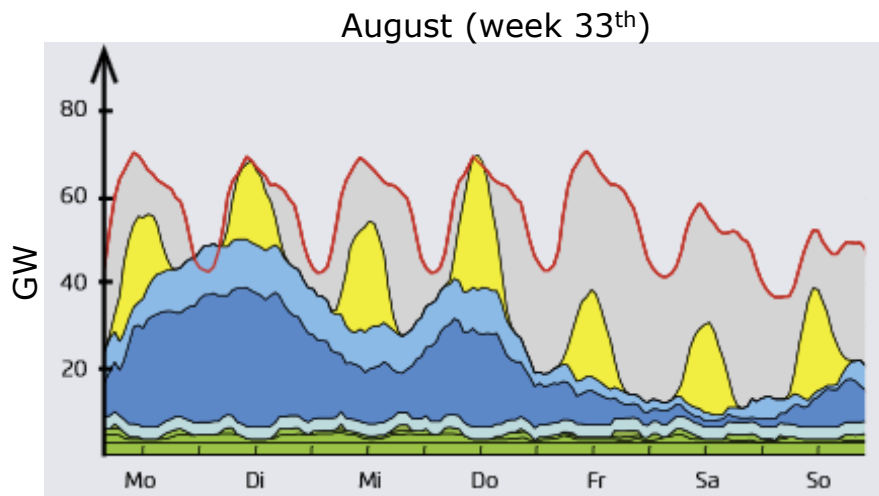
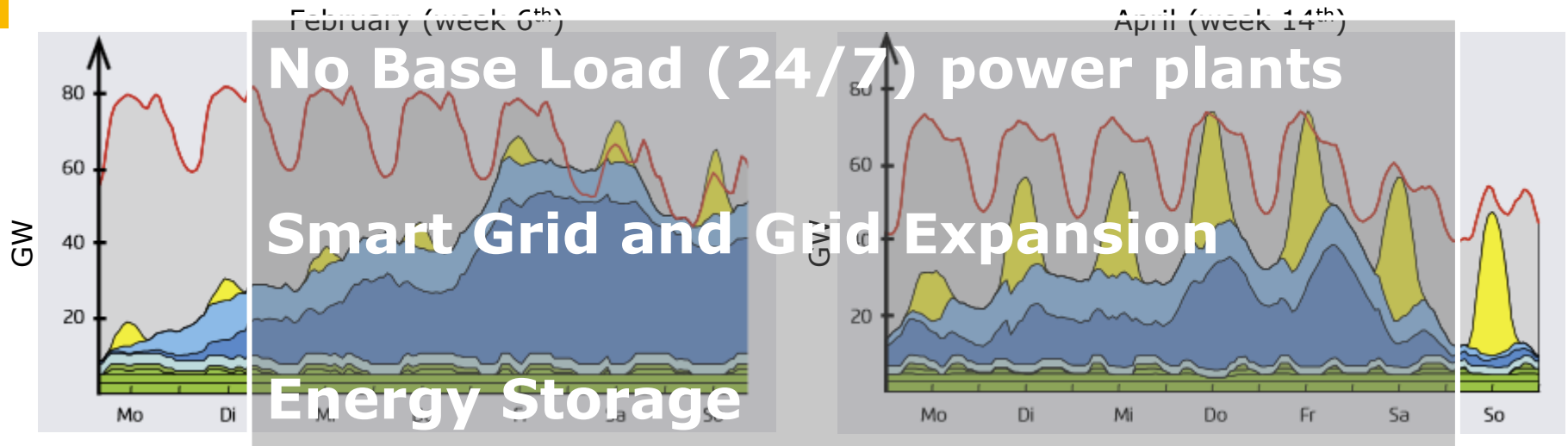


## Simulation of German grid in 2022: Daily & seasonal fluctuations increase



PV
  Wind
  Biomass
  Fossiles
  Electricity demand

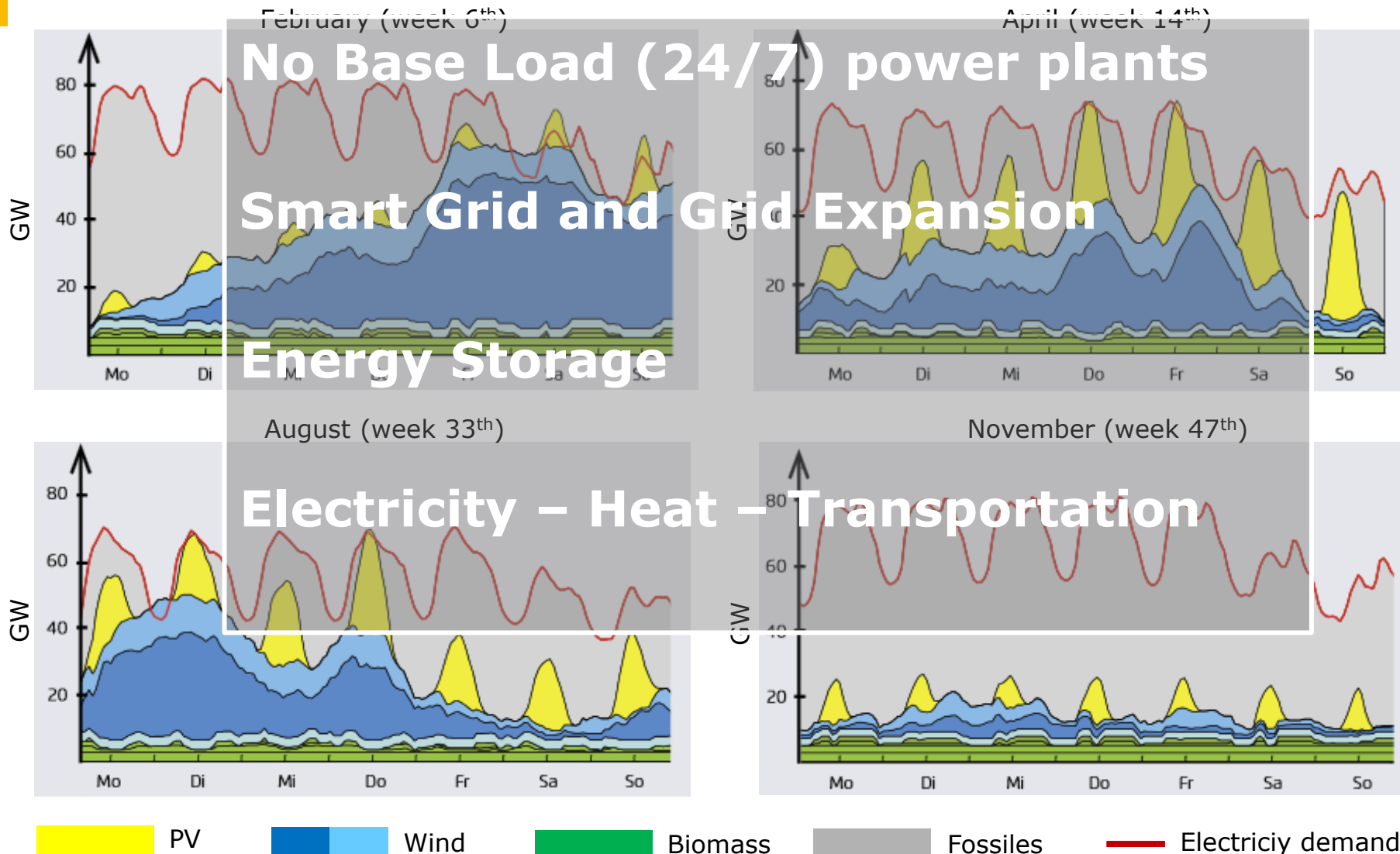
## Simulation of German grid in 2022: Daily & seasonal fluctuations increase



PV
  Wind
  Biomass
  Fossiles
  Electricity demand

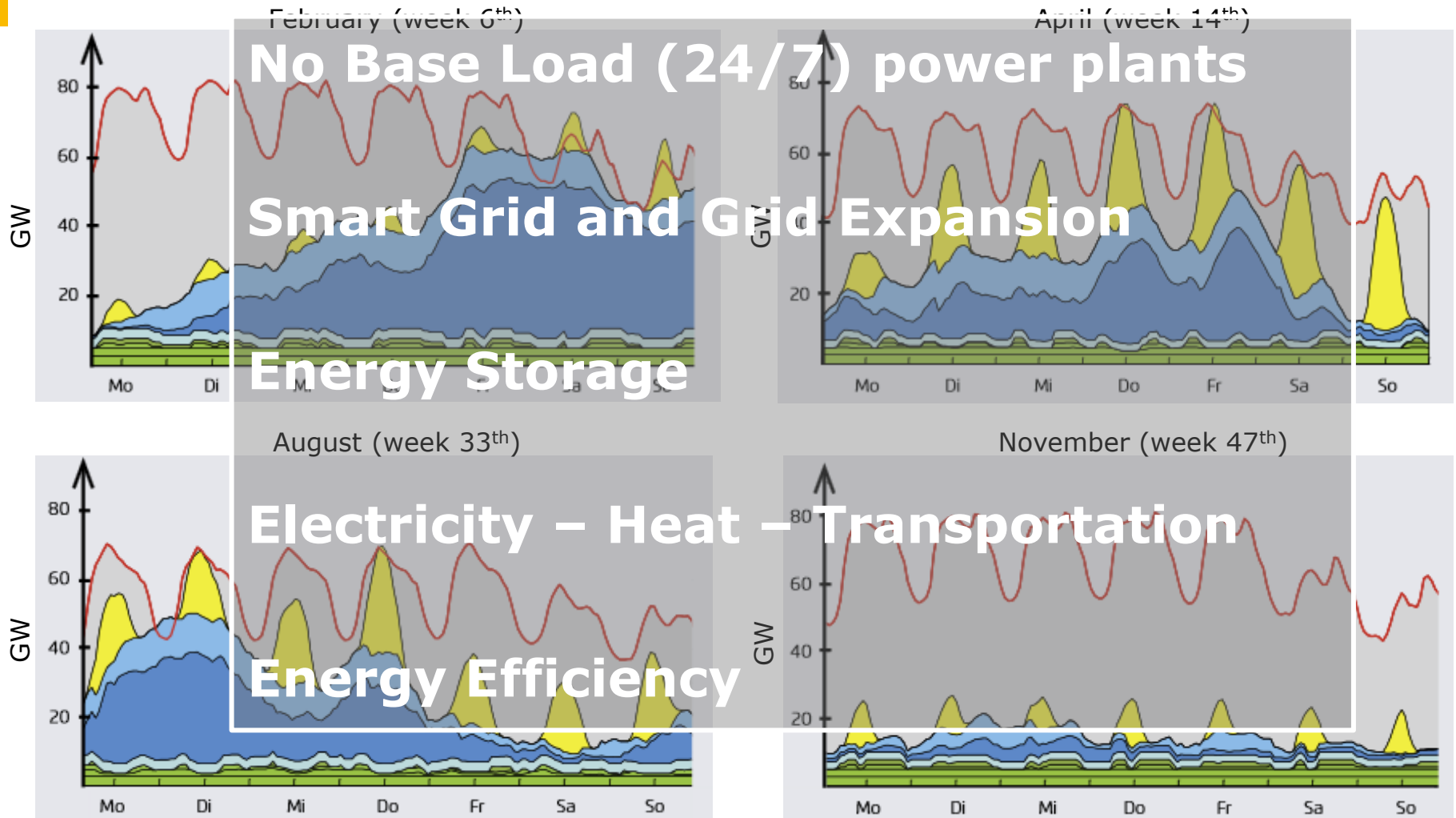
\*Source: Agora Energiewende 2015

## Simulation of German grid in 2022: Daily & seasonal fluctuations increase



\*Source: Agora Energiewende 2015

## Simulation of German grid in 2022: Daily & seasonal fluctuations increase



*Germany Trade & Invest (GTAI)* is the foreign trade and inward investment promotion agency of Germany.



**GERMANY  
TRADE & INVEST**



*GTAI* advises and supports foreign companies seeking to establish business in Germany. Our free of charge investment consultancy includes:



*GTAI* advises and supports foreign companies seeking to establish business in Germany. Our free of charge investment consultancy includes:

Market and  
Industry  
Analyses



*GTAI* advises and supports foreign companies seeking to establish business in Germany. Our free of charge investment consultancy includes:

Market and  
Industry  
Analyses

Project  
Management  
Support



*GTAI* advises and supports foreign companies seeking to establish business in Germany. Our free of charge investment consultancy includes:

Market and  
Industry  
Analyses

Project  
Management  
Support

Market  
Entry  
Strategy



*GTAI* advises and supports foreign companies seeking to establish business in Germany. Our free of charge investment consultancy includes:

Market and  
Industry  
Analyses

Project  
Management  
Support

Market  
Entry  
Strategy

Location  
Proposals



*GTAI* advises and supports foreign companies seeking to establish business in Germany. Our free of charge investment consultancy includes:

Market and  
Industry  
Analyses

Tax & Legal  
Framework

Project  
Management  
Support

Market  
Entry  
Strategy

Location  
Proposals





*GTAI* advises and supports foreign companies seeking to establish business in Germany. Our free of charge investment consultancy includes:

Market and  
Industry  
Analyses

Tax & Legal  
Framework

Project  
Management  
Support

Financing  
and  
Incentives

Market  
Entry  
Strategy

Location  
Proposals



*GTAI* advises and supports foreign companies seeking to establish business in Germany. Our free of charge investment consultancy includes:

Market and  
Industry  
Analyses

Tax & Legal  
Framework

Project  
Management  
Support

Financing  
and  
Incentives

Market  
Entry  
Strategy

Market  
Data

Location  
Proposals



*GTAI* advises and supports foreign companies seeking to establish business in Germany. Our free of charge investment consultancy includes:

Market and  
Industry  
Analyses

Tax & Legal  
Framework

Project  
Management  
Support

Financing  
and  
Incentives

Market  
Entry  
Strategy

Market  
Data

Location  
Proposals

Contact to  
local  
Institutions



Our Financing & Incentives team assists you in finding suitable financing solutions for your investment project.

Our Financing & Incentives team assists you in finding suitable financing solutions for your investment project.

INCENTIVES

Our Financing & Incentives team assists you in finding suitable financing solutions for your investment project.

**INCENTIVES**

What financial support does Germany offer to foreign investors?



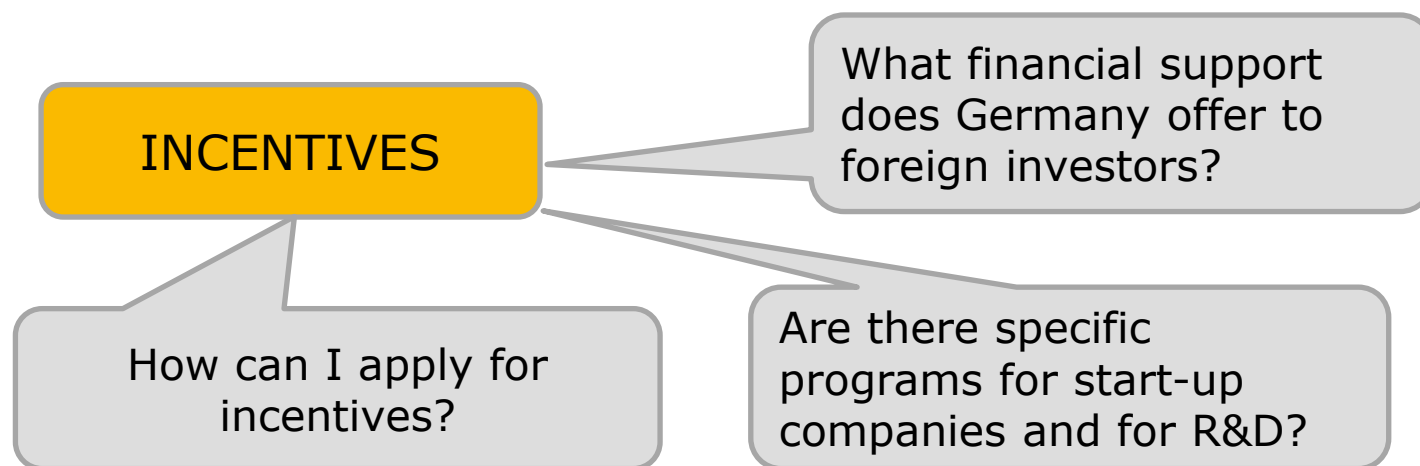
Our Financing & Incentives team assists you in finding suitable financing solutions for your investment project.

## INCENTIVES

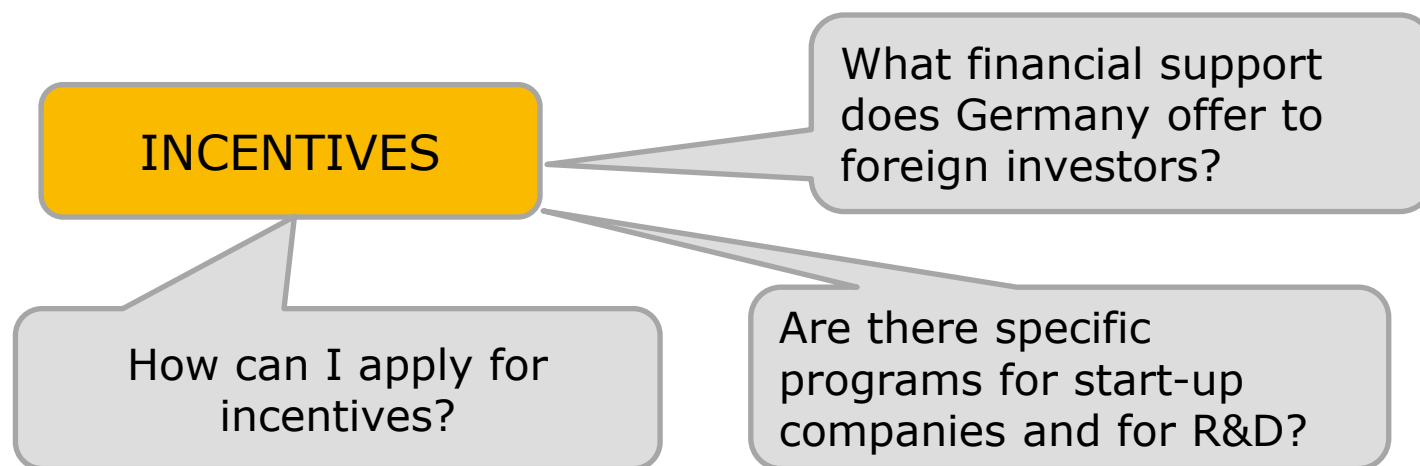
What financial support does Germany offer to foreign investors?

Are there specific programs for start-up companies and for R&D?

Our Financing & Incentives team assists you in finding suitable financing solutions for your investment project.



Our Financing & Incentives team assists you in finding suitable financing solutions for your investment project.



**FINANCIAL  
PARTNERS**

Our Financing & Incentives team assists you in finding suitable financing solutions for your investment project.



Our Financing & Incentives team assists you in finding suitable financing solutions for your investment project.



Our Tax & Legal Team assists you in understanding the tax and legal framework in Germany.

Our Tax & Legal Team assists you in understanding the tax and legal framework in Germany.

**INCORPORATION**



Our Tax & Legal Team assists you in understanding the tax and legal framework in Germany.

**INCORPORATION**

What is the procedure for setting up a company in Germany?

Our Tax & Legal Team assists you in understanding the tax and legal framework in Germany.

## INCORPORATION

What is the procedure for setting up a company in Germany?

Does my business activity require a specific license?

Our Tax & Legal Team assists you in understanding the tax and legal framework in Germany.

## INCORPORATION

What is the procedure for setting up a company in Germany?

Does my business activity require a specific license?

## TAXATION

Our Tax & Legal Team assists you in understanding the tax and legal framework in Germany.

## INCORPORATION

What is the procedure for setting up a company in Germany?

Does my business activity require a specific license?

Are there local variations of the overall corporate income tax rate in Germany?

## TAXATION

Our Tax & Legal Team assists you in understanding the tax and legal framework in Germany.

## INCORPORATION

What is the procedure for setting up a company in Germany?

Does my business activity require a specific license?

Are there local variations of the overall corporate income tax rate in Germany?

Can you support us in identifying attractive locations?

## TAXATION

Our Tax & Legal Team assists you in understanding the tax and legal framework in Germany.

## INCORPORATION

What is the procedure for setting up a company in Germany?

Does my business activity require a specific license?

Are there local variations of the overall corporate income tax rate in Germany?

Can you support us in identifying attractive locations?

## TAXATION

## HR

Our Tax & Legal Team assists you in understanding the tax and legal framework in Germany.

## INCORPORATION

What is the procedure for setting up a company in Germany?

Does my business activity require a specific license?

Are there local variations of the overall corporate income tax rate in Germany?

Can you support us in identifying attractive locations?

## TAXATION

Are there different employment models available?

## HR



Our Tax & Legal Team assists you in understanding the tax and legal framework in Germany.

## INCORPORATION

What is the procedure for setting up a company in Germany?

Does my business activity require a specific license?

Are there local variations of the overall corporate income tax rate in Germany?

Can you support us in identifying attractive locations?

## TAXATION

Are there different employment models available?

## HR

How do I register employees with social security?

**Energy, Environment & Resources**  
**Mr. Thomas Grigoleit**

Director  
T. +49 30 200 099-224  
F. +49 30 200 099-999  
thomas.grigoleit@gtai.com

**Tax & Legal Services**  
**Ms. Christina Schön**

Senior Manager  
T. +49 30 200 099-506  
F. +49 30 200 099-999  
christina.schoen@gtai.com

Supported by the Federal Ministry for Economic Affairs and Energy on the basis of a decision by the German Bundestag.

